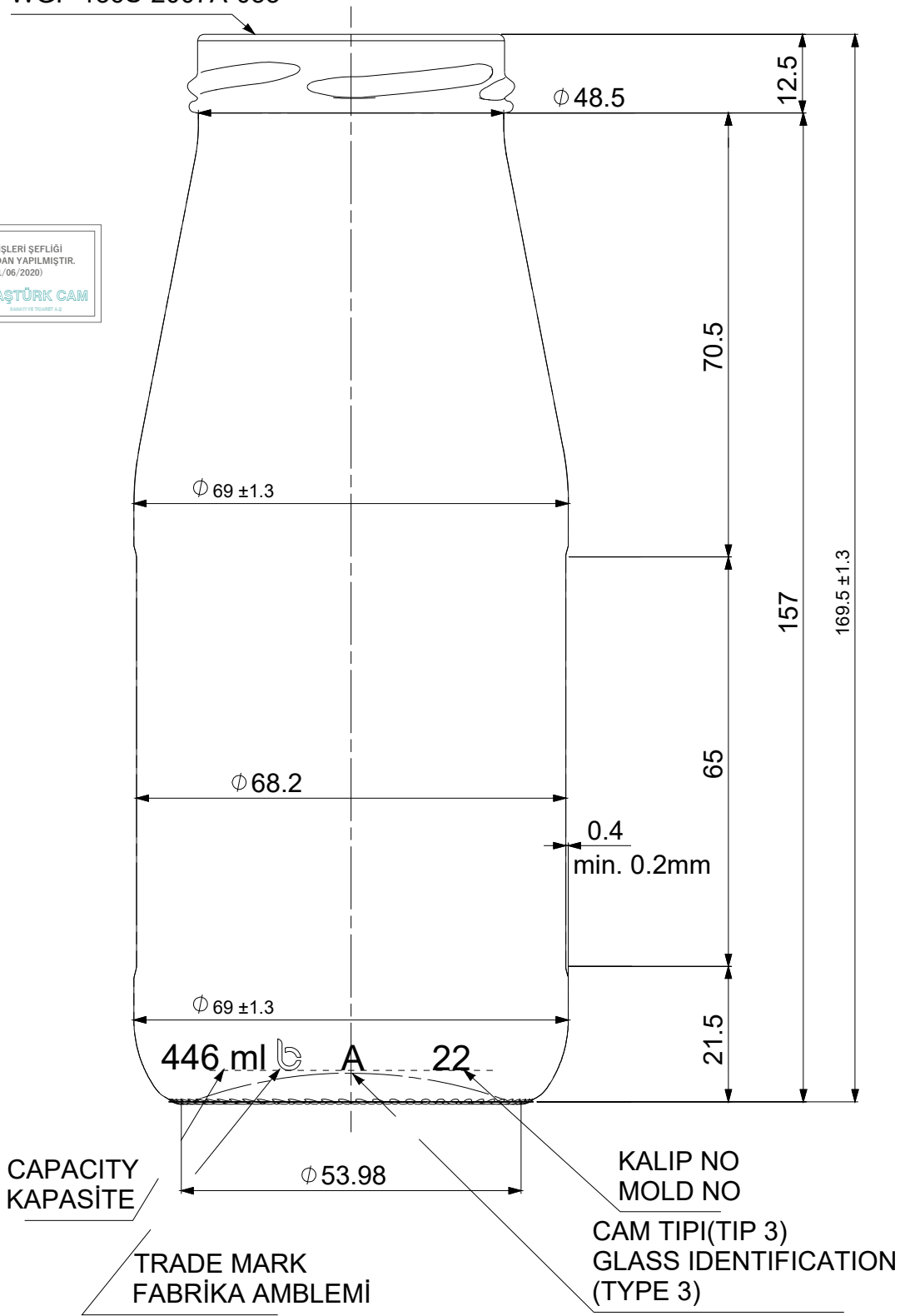


WGF-136S-2007A-053



R1	-	-	-	-
REV	ACIKLAMA REMARK	TARİH DATE	CİZEN MADE BY	KONTROL CHECKED BY
DEĞİŞİKLİKLER / REVISIONS				
CİZEN DRAWN BY	-	KAFA STD FINISH	WGF-136S-2007A-053	
KONTROL CHECKED BY	01-06-2020	DOLUM HACMI FILLING CAP (cc)	SİLME HACMI BRIMFULL CAP (cc)	446
ONAYLAYAN CONFIRMED BY	-	AĞIRLIK WEIGHT (gr)	C K (TEORİK) W T (THEORET)	(mm)
TARİH DATE	#	RENK COLOR	DENGE ACISI E. ANGLE (°)	-
ÖLÇEK SCALE	-	446 CC PASSATA NAPOLI SOS SİSESİ		-
Bu tasarım BASTURK CAM SANAYİ tarafından gerçekleştirilmiş olup bütün hakları müşteriye devredilinceye kadar şirketimize aittir. This design has been realized by BASTURK GLASS INDUSTRY and all rights belong to our company until the customer is transferred.		REFERANS REFERENCE	ÜRÜN NO PRODUCT NO	GECİCİ KOD TEMP CODE
		-	N44601T1R0	-



**BASTURK CAM**  
**SANAYİ VE TİCARET A.Ş.**